

ATM Interface Transformers

SMD versions available on Tape & Reel

Designed for 155Mbps ATM applications over UTP-5 cable

Supports 100 Base-X and Twisted Pair FDDI

Supports either transmit or receive channels

IEEE 802.3 Compatible

Low common mode emissions

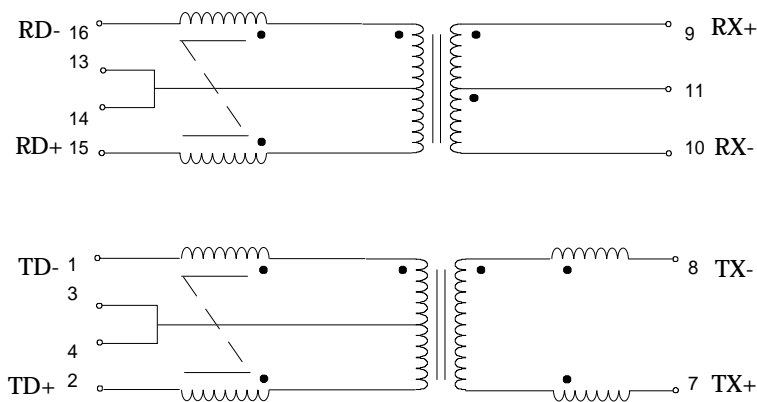
Fast Rise Times

Electrical Specifications at 25° C

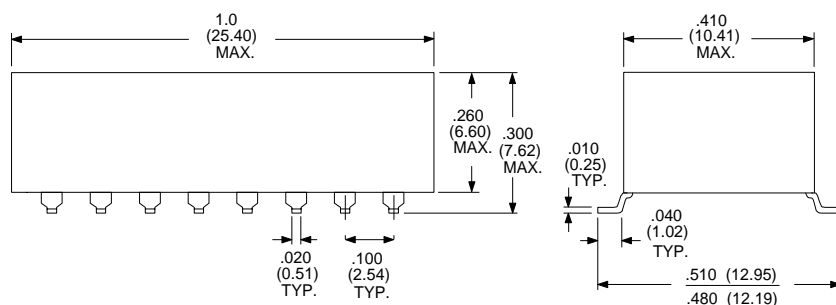
PARAMETER	TYP.	UNITS
Insertion Loss (0.1 to 125 MHz)	-1.1	dB
Rise Time (10 to 90%)	2.5	ns
Return Loss:		
(0.1 to 60 MHz) TX	-15	dB
(0.1 to 60 MHz) RX	-17	dB
(60 to 100 MHz) TX	-11	dB
(60 to 100 MHz) RX	-15	dB
Differential to Common Mode Rejection		
(0.1 to 60 MHz) TX	-45	dB
(0.1 to 60 MHz) RX	-40	dB
(60 to 100 MHz) TX	-40	dB
(60 to 100 MHz) RX	-35	dB
Crosstalk (0.1 to 60 MHz)	-40	dB
(60 to 100 MHz)	-38	dB
Isolation Min.	1500	Vrms

TX = TRANSMIT CHANNEL
RX = RECEIVE CHANNEL

SCHEMATICS



Dimensions in Inches (mm)



Available on Tape & Reel

Rhombus P/N: T-15503	
Cust. P/N:	Name:
Date: 5/22/98	Sheet: 1 of 1